

## Proposed Solution:

# System Specifications – Option 1

## SOURCE CAPTURE SYSTEM:

### (1) SPIRE Self Cleaning Cartridge Collector

*Unit Includes:*

- (1) 15 HP, 480 Volt, 3 Phase Motor
- 5,500 CFM of Air Flow @ 9.5" of S.P.
- (10) PL-12D26-A15-OC-DBG-10 Cartridge Filters
- Pulse Self-Cleaning System
- ePad Control System, including Motor Starter and Disconnect
- SafeSensor Clean Air Plenum Particulate Monitor Protection
- FM200 Fire Suppression System w/Intake Damper
- AutoSaver Power Usage Sensor
- Dust Drawer Containment (Removable)
- Delta3 Spark Arrestor
- Collector Dimensions: 36"D x 36"W x 162"H

### (4) Streamline Hoods, Supports & Curtaining

### (4) Job Lots of Ducting & Hardware

### (1) Installation of Above Materials

**Total System Price.....\$ 104,225\***

*\* This option to accommodate Rogue's weld cells being delivered in 4 weeks.*

*Finalized location of cells will be required to confirm pricing.*

## OPTIONAL:

**(4) Custom Color Hoods (9420-73194 A/G RF Gun Metal).....\$ 1,475 total\*\***

**\*\* Increases lead time by 4-5 weeks**

## Application Information

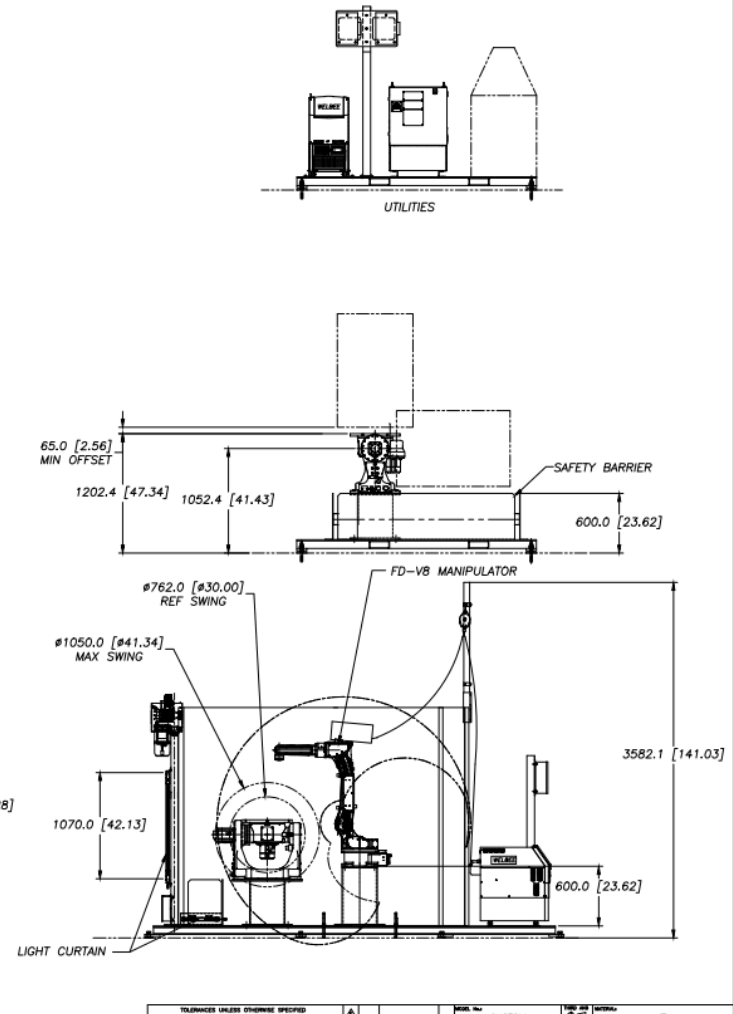
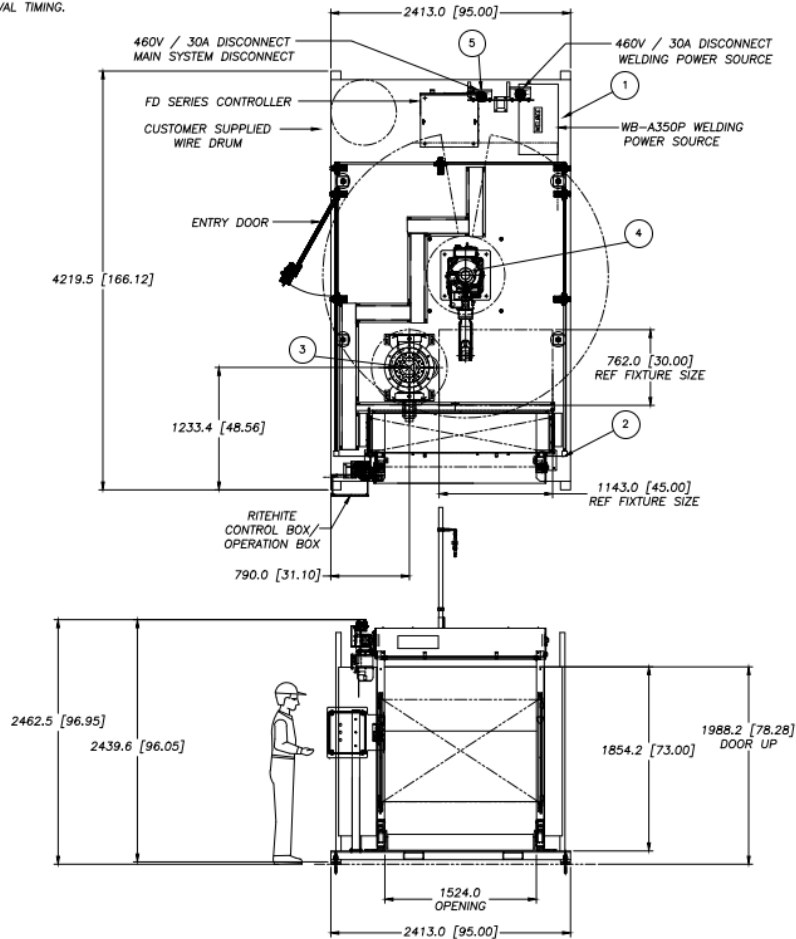
---

Number of Cells:	4
Number of Robots per Cell:	1
Size of Cell:	8'W x 10'D x 13'H
Size of Openings:	5'W x 7' Tall Flash Door
Material Being Welded:	Chromoly
Oil on Parts:	Minimal
Hours of Operation:	15 hrs/day, 5 days/week

# Data Gathering: Application Information

APPROVAL SIGNATURE/DATE \_\_\_\_\_

NOTES:  
ALL FIXTURE INFORMATION IS AN APPROXIMATION  
FROM INFORMATION GATHERED ON BASECAMP.  
NO CONFIRMED FIXTURE DATA WAS PROVIDED TO OTC DAIHEN  
AT APPROVAL TIMING.



# Proposed Solution:

## Spire Series Features

### Features:

- **Deflector Plates:** Deflector plates within the top of the dust cabinet which protect filters from particulate abrasion, creates a high-velocity airstream around the filters to bring more dust into the containment chamber.
- **Pulsing System:** Pulse nozzles are engineered to create high level shock wave through the entire filter dislodging dust from the filter pleats sending the captured dust to the dust holding bin.  
\*Compressed air requirement: 10.7 SCFM @ 85 PSI
- **PleatLock Filters:** RoboVent's new PleatLock technology has been engineered to outlast even the toughest competitor filter.
- **Control Panel:** The new 7" full-color, HMI Control Panel is easy to navigate to help keep the system running smoothly and operators informed. (Wall or Unit Mounted)
- **e-Drive Automatic VFD:** The eDrive constantly monitors airflow and automatically adjusts the motor RPM to compensate for filter loading.
- **SafeSensor Particulate Monitoring:** SafeSensor is the Spire's advanced particulate-monitoring device that can detect leaks pas the filters
- **Dust Containment:** 15 gallons of dust containment, which means less servicing and better performance of the unit with more consistent CFM & static pressure.
- **Dimensions:** 36" x 36" x 162"

