

SPECIFICATIONS

ELECTRICAL: 480/3/60 APPROX. 252 AMPS

HEAT INPUT: 180 KW

COMPRESSED AIR: 100 PSI

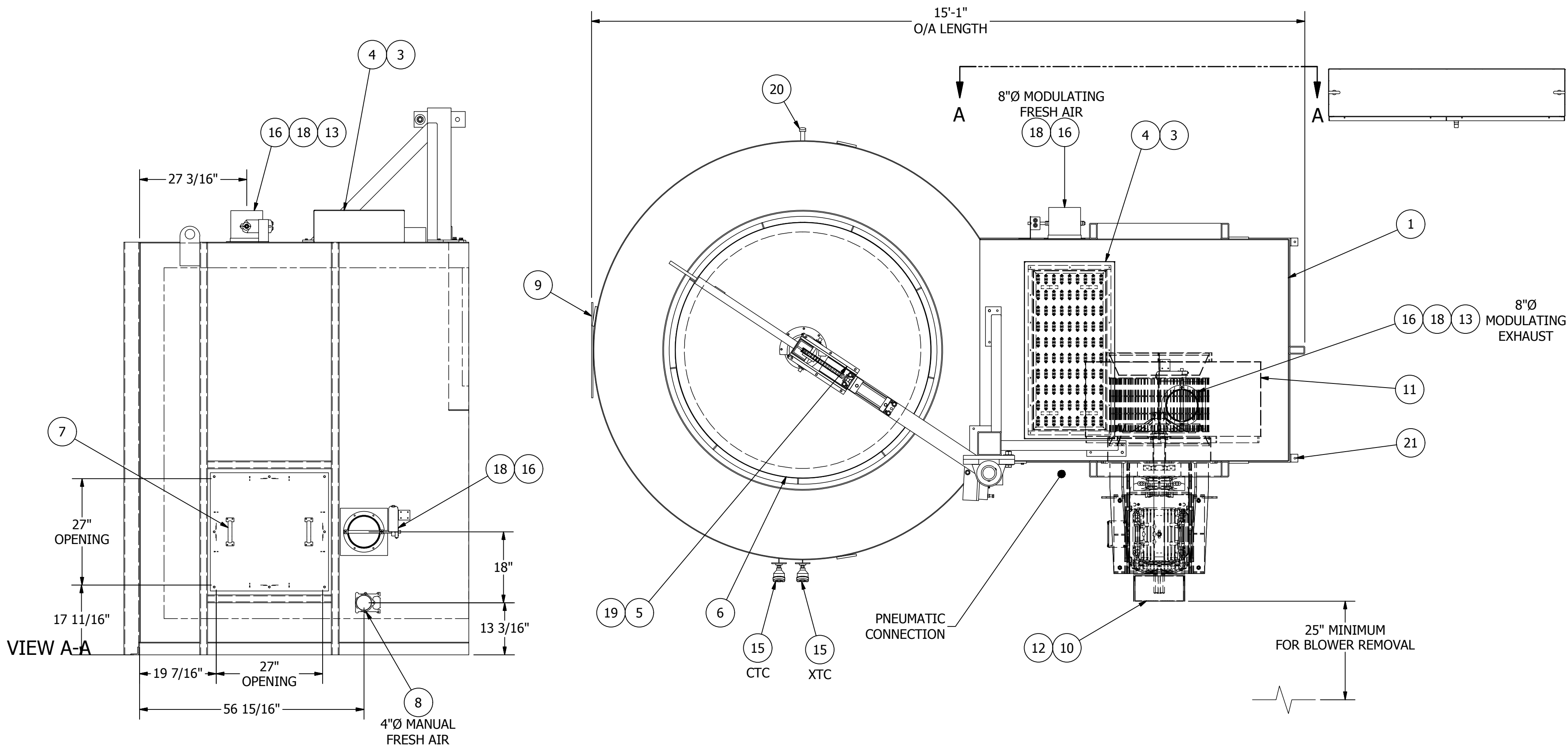
RECIRCULATION: 14,000 CFM @ 25 HP

EXHAUST: 8"Ø MODULATING

LOADING: 4,000# GROSS

TEMPERATURE: 1250° F MAXIMUM  
1000° F NORMAL  
125° F ABOVE AMBIENT MINIMUM

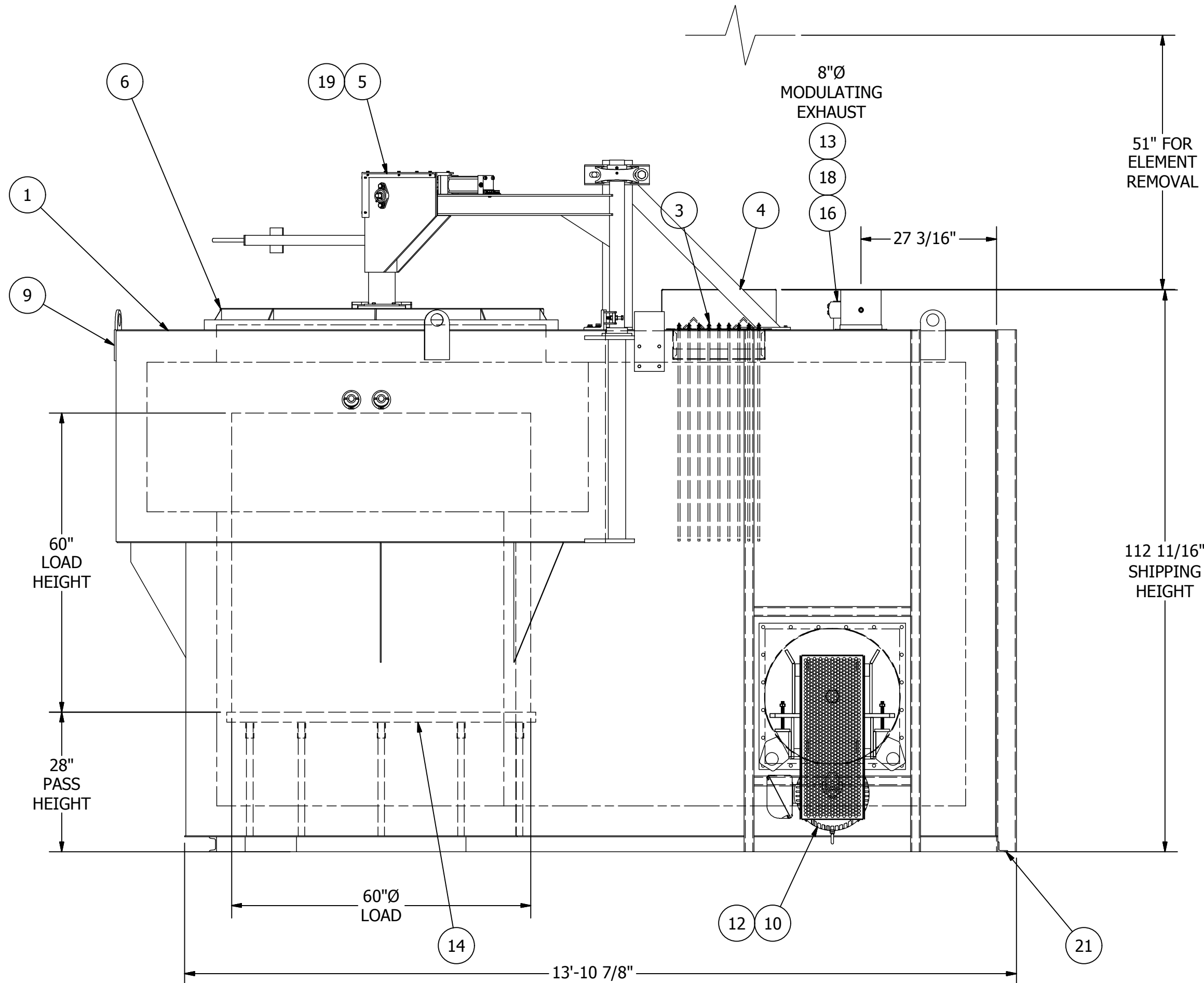
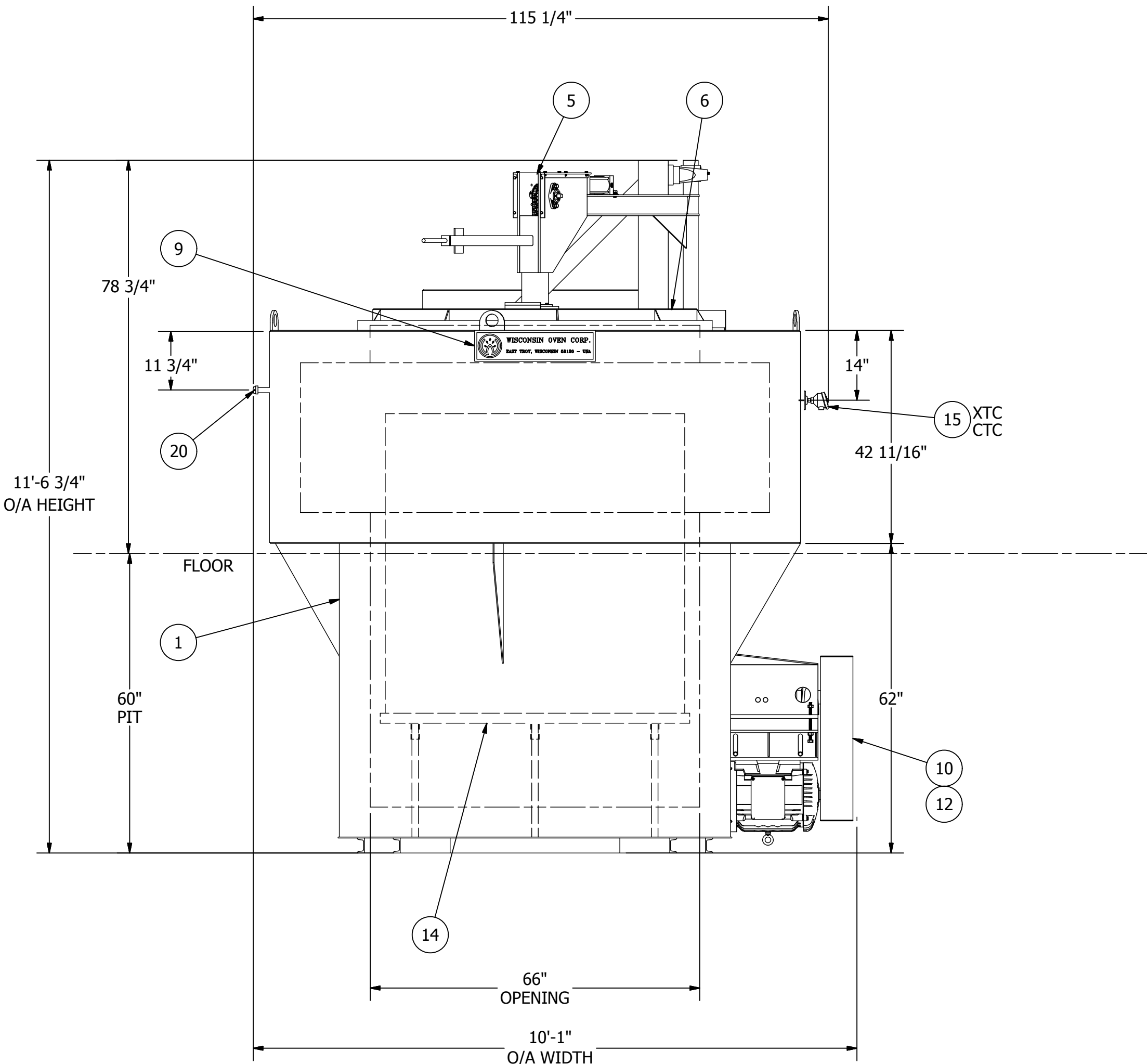
PAINT COLOR: OVEN - FEDERAL SAFETY BLUE (341-0192)  
CONTROL PANEL - MANUFACTURER'S GRAY  
CONDUIT - NOT PAINTED  
GUARDS - OSHA YELLOW



ALL DIMENSIONS  
ARE IN INCHES

THIS DRAWING, INCLUDING THE PRINCIPLE OF DESIGN, IS THE PROPERTY OF AND IS SUBMITTED BY WISCONSIN OVEN CORPORATION WITH THE AGREEMENT THAT IT IS NOT TO BE REPRODUCED, COPIED, OR LOANED, IN PART OR WHOLE. IT IS NOT TO BE USED IN ANY MANNER THAT MAY CONSTITUTE A DETRIMENT DIRECTLY OR INDIRECTLY TO WISCONSIN OVEN CORP. ACCEPTANCE OF THIS DRAWING WILL BE CONSIDERED AS AN AGREEMENT TO THE ABOVE.

- NOTES:**
1. WOC LARGE LOGO TO BE LOCATED ON TOP CENTERLINE OF OVEN
  2. THIS OVEN IS NOT RATED FOR CLASS "A" OPERATION
  3. REMOVE DOOR LIFT FOR SHIPPING. OVEN SHIPPED COMPLETELY ASSEMBLED. CONTROL PANEL SHIPS LOOSE  
SMALLEST DOOR/PASSAGEWAY: 10'-6" HIGH X 12'-0" WIDE  
CEILING HEIGHT AT FINAL JOBSITE: -'
  4. APPROXIMATE SHIPPING WEIGHT: 10,400 LBS
  5. EXHAUST NOTE:  
THE EXHAUST STACK FROM OUR EQUIPMENT TO ATMOSPHERE MUST BE DESIGNED WITH A MAXIMUM AIRFLOW RESISTANCE OF 3/4" WC FOR POWERED EXHAUST; 1/2" WC FOR NON-POWERED EXHAUST, AND MUST BE SUPPORTED INDEPENDENTLY OF THE EXHAUST BLOWER.
  6. INSTALLATION PROCEDURE:  
THE EQUIPMENT MUST BE LEVELED AND SET PLUMB. SHIMS CAN BE USED TO LEVEL THE EQUIPMENT. THE EQUIPMENT MUST BE LAGGED TO THE FLOOR WITH THE PROVIDED MOUNTING PADS. FAILURE TO INSTALL THE EQUIPMENT AS NOTED WILL VOID THE WARRANTY.  
IN ACCORDANCE WITH NFPA 86, SPECIFICATION 5.1.4.1 STATES "FURNACES (OVENS) SHALL BE LOCATED WITH SPACE ABOVE AND ON ALL SIDES FOR INSPECTION AND MAINTENANCE PURPOSES." WISCONSIN OVEN CORPORATION RECOMMENDS 18" OF CLEARANCE, WHICH PROVIDES ROOM FOR HEAT DISSIPATION. INTERPRETATION AND COMPLIANCE WITH THE REQUIREMENT ARE THE SOLE RESPONSIBILITY OF THE PURCHASER.
  7. THREE (3) POINT TEMPERATURE UNIFORMITY SURVEY: ±15°F @ 1000°F  
\* INDICATES TEMPERATURE UNIFORMITY TEST LOCATION, SEE SIGNED TEST SHEET.



ITEM	QTY	DESCRIPTION	LENGTH	WIDTH	PART NUMBER	DRAWING	GRP
1	1	OUTER SHELL ASSEMBLY				201-X07888A-1	
2	1	INNER SHEL ASSEMBLY				213-X07888A-1	
3	1	HEATER PLUG, 180 KW				217-X-1	
4	1	TERMINAL GUARD ASSEMBLY				214-X07888A-1	
5	1	DOOR LIFT ASSEMBLY				203-X07888A-2	
6	1	OVEN LIFT DOOR				203-X07888A-1	
7	1	ACCESS PLUG ASSEMBLY				203-X07888A-3	
8	1	BLASTGATE, FULL, 4" DIA			311-0052		
9	1	LARGE WOC LOGO			343-0001		
10	1	RECIRCULATION BLOWER			FHD245-100-CCW	DEKALB	
11	1	SCROLL HOUSING			FHD245 CCW	DEKALB	
12	1	AIR FLOW SWITCH					
13	1	EXHAUST AIR FLOW SWITCH MOUNTING			S	241-S-1173	9
14	1	OVEN HEARTH ASSEMBLY				220-X07888A-1	
15	2	THERMOCOUPLE MOUNTING: XTC = 12, CTC = 24			S	220-4-1813	1
16	2	MODULATING DAMPER ASSEMBLY, 8" DIA			S	241-S-1169	
17	1	POWER & CONTROL WIRING				501-X07888A-1	
18	2	ACTUATOR, SPRING RETURN, MODULATING, 62 LB-IN, 2 AUX SW			313-0261	SIEMENS GMA166.1U	
19	REF	PNEUMATIC PIPING				227-X07888A-1	
20	1	PIPE, 304 SS, 3/4, SCHEDULE 40, X 240 LG	24		304-0073	THREAD 1 END W/ CAP	
21	1	STANDARD MOUNTING ANGLE			S	220-3-3442	1

C	AS BUILT	5/19/2015	KR
B	CUSTOMER REVISIONS	1-23-15	KR
A	RELEASE FOR APPROVAL	1-14-15	KR
REV	DESCRIPTION	DATE	BY
REVISION HISTORY			

WISCONSIN OVEN CORP. EAST TROY, WISCONSIN 53120			
GENERAL ASSEMBLY PIT-60/60-12E			REV. C
DRAWN BY	krogers	DATE	1/14/2015
CHK'D BY	JAL	DATE	1/15/2015
SCALE	1/20	JOB NO	07888A
DWG. NO.			133-X07888A-1
Page 1 OF 2			



ALL DIMENSIONS  
ARE IN INCHES

THIS DRAWING, INCLUDING THE PRINCIPLE OF DESIGN, IS THE PROPERTY OF AND IS SUBMITTED BY WISCONSIN OVEN CORPORATION WITH THE AGREEMENT THAT IT IS NOT TO BE REPRODUCED, COPIED, OR LOANED, IN PART OR WHOLE. IT IS NOT TO BE USED IN ANY MANNER THAT MAY CONSTITUTE A DETRIMENT DIRECTLY OR INDIRECTLY TO WISCONSIN OVEN CORP. ACCEPTANCE OF THIS DRAWING WILL BE CONSTRUED AS AN AGREEMENT TO THE ABOVE.

